

# Custom Shipping Cases

New World Case, Inc. 10 River Road, Suite 102, Uxbridge MA 01569 888.882.0107

## RACK CASES



Durable Cases for Delicate Equipment. The following pictures show examples of the various styles available in our heavy duty shipping and carrying cases. All custom cases must be quoted based on your specifications and particular needs.

Every case is custom-manufactured by skilled workers to assure the highest possible quality. Our ATA rated cases conform to the Air Transport Association specification 300 Category 1 standard (A.T.A. 300) for reusable shipping containers.



### DOUBLE COVER RACKMOUNT

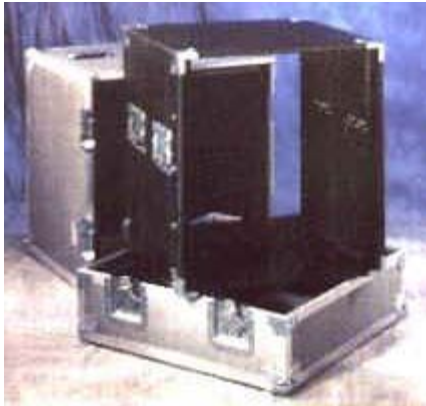
Manufactured according to our Heavy-Duty (ATA Style) specifications, the Double Cover Rackmount case offers the convenience of the rackmount design and offers protection when transporting your equipment under your own supervision such as an automobile or company truck/van. When size, weight, and budget are of the most importance, this is the style for you.

### DOUBLE COVER SHOCKMOUNT

While the outer shell of this case is manufactured to our Heavy-Duty (ATA Style) specifications, this style of rackmount case contains an inner rack which is isolated from it's outer shell by a shock absorbing mechanism combining foam and rubber motor mounts.

This case offers the convenience of the Double Cover Rackmount case while offering the protection of

shipping your equipment under the more strenuous conditions of common carriers such as air freight and trucking companies.



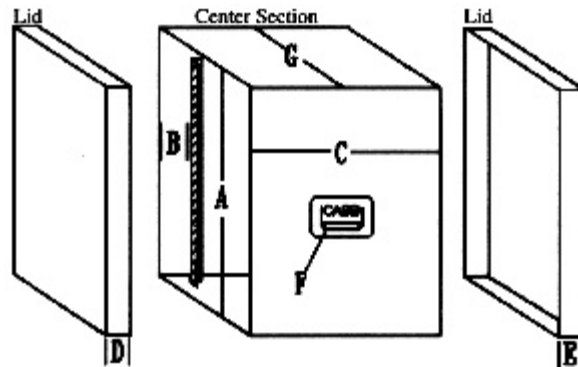
### RACK IN A CASE

When your shipping needs and formal presentations must work together, the rack in a lift-off case, a combination which allows you to completely remove the rack from the foam lined case and place it onto a table or other surface, offers the protection and versatility you need. This combination offers protection of shipping your equipment under the more strenuous conditions of common carriers, while allowing the inner rack to remain cosmetically clean and to be utilized in small presentation spaces once removed from the case.

## RACK CASE QUOTE

Every question listed below must be answered to allow us to help you properly. If you have any questions, please do not hesitate to contact us at **(888) 883-0107** and we will help you design or pick out the case you need!

As all New World Case, Inc. cases are custom made, we are able to manufacture your rack to your specific needs. Custom specifications range from:



- A. Number of rack spaces. (The E.I.A. has set the spacing of rack units at 1 space = 1-3/4")
- B. Distance the rack rails are recessed into the center section of the case (This is determined by whether the equipment to be mounted into the case contains handles, knobs, switches, cables, etc. along its front or rear panel, and whether you want these protrusions to be flush with the center section of the case, recessed inside the center section, or extend out from the center section and into the lid.)

- C. Depth of center section (Once you have determined the distance the rails will be recessed into the center section of the case, the depth of the center section is determined by the depth of the equipment to be mounted into the case and added to the recess of the front rails [and rear rails if applicable].)
- D. Lid depths (The lid depths are determined by the distance in which the protrusions of your equipment will extend into one or both of the lids, if any.) The min. lid depth is 2-1/4" (inside dimension) not including foam.
- E. see note D
- F. Number of handles and their placement (This will depend upon the weight of your equipment and size of the case. We recommend handles on the lids of larger cases.)
- G. Left to right dimension if your equipment is not E.I.A. width. (The E.I.A. has set the standard for rackmount width at 19"(18-5/16" from hole to center hole.)

(If your equipment is not standard E.I.A. width, we can install shelves for your equipment to rest upon and then secure your equipment from moving with shock absorbing foam.)

- |                 |    |  |
|-----------------|----|--|
|                 |    | 1. What style of rackmount case do you need?<br>(Double Cover Rackmount, Double Cover Shockmount, or Rack In a Case)?    |
|                 |    | 2. How many rack spaces do you need? (A)   |
|                 |    | 3. What distance do you need the rails recessed into the center section? (B)   |
|                 |    | 4. How much distance do you need behind the rails?   |
|                 |    | 5. What depth do you need the center section to be? (C)  |
|                 |    | 6. What lid depths do you need? (D&E)  |
|                 |    | front  |
|                 |    | back   |
|                 |    | 7. How many handles do you need on the case? (F)   |
| yes             | no | Do you need handles on the lids?   |
|                 |    | If yes, how many?  |
| yes             | no | 8. Is your equipment rackmountable?  |
| <b>OPTIONS:</b> |    |  |
| yes             | no | 1. Do you need rear rails?   |
|                 |    | If yes, what distance do you need the rear rails recessed into the center section of the case? (B)                       |
|                 |    | What distance do you need between front and rear rails?  |
| yes             | no | 2. Do you need drawers?  |
| yes             | no | Shelves?   |
| yes             | no | 3. Do you need table legs?   |
|                 |    | (Available in larger double cover Shockmount cases only - table legs are mounted into one or both lids to form a table.) |
| yes             | no | 4. Do you need casters?  |
|                 |    | (With the caster option, a 3/4" birch casterboard painted black is included.)  |
| yes             | no | 5. Do you need a keylock?  |
|                 |    | (Double cover rackmount cases need at least 4 keylocks.)   |

**Prefer to receive quote via:**

E-mail

Phone

Fax

Please send me a catalog

Please contact me about my case requirements

Your

Name:

Title:

Company:

Address1:

Address2:

City:

State

Zip

Telephone:

Fax:

(due to the high volume of email spam people receive, we prefer to fax your quote if possible)

E-Mail

Address:

Type your comments or special requirements below. Please indicate an estimated number of cases and required deliver date: